

LTC Series

650 mLPM Free Flow



LTC Series brushless motor shown

Typical Applications

- Large Format Printers
- Urinalysis
- Photo Processing Printers

Mini Pumps (liquids)

LTC Series Liquid Pumps are offered in both brush and brushless DC motor drives that can be configured for your specific performance requirements. These pumps are designed to handle a wide range of liquid and gas media.

Features

- **Patented Fluid-Blok™ Advanced Sealing Technology*:**
Redundant sealing techniques eliminate leaks.
- **Self-Priming/Dry Running:**
Monolithic diaphragm design allows for maximum suction/priming and continuous dry operation.
- **Longevity:**
Unique brushless DC motor design and advanced proprietary diaphragm elastomer gives the highest benchmark for service-free life.
- **Low Power Consumption:**
Advanced flow path and efficient valve system design allows for maximum flow with low power consumption.
- **Port Design:**
Port design allows for top or bottom face seal and is molded for 1/4-28 UNF threaded fittings, as well as four head configurations.
- **Chemical Resistant:**
Structured to be inert to a variety of media with selected wetted components.
- **Lightweight, Compact Size:**
Compact configuration allowing designers to minimize system weight and space requirements.
- **Flexible Mounting Options:**
Maximizes mounting flexibility by offering several mounting options.
- **FDA-Approved Materials:**
Parker pumps and compressors are commonly used in FDA-approved systems.

Performance Data

Physical Properties

Operating Environment:	41 to 122°F (5 to 50°C)
Media:	Most Liquids and Gases
Humidity:	0 – 95% RH
Wetted Material:	EPDM, AEPDM, Fluorocarbon, Teflon/EPDM Laminate
Valves:	EPDM, AEPDM, Perfluoro, Fluorocarbon
Pump Head:	Vectra (Liquid Crystal Polymer)

Electrical

Motor Type (DC):	Brush, Brushless
Nominal Motor Voltages:	6, 12, 24 VDC Other voltages available upon request
Current Range:	390 mA - 1.1A*
	*Dependent on motor type, voltage, pressure/vacuum and flow requirement.

Pneumatic

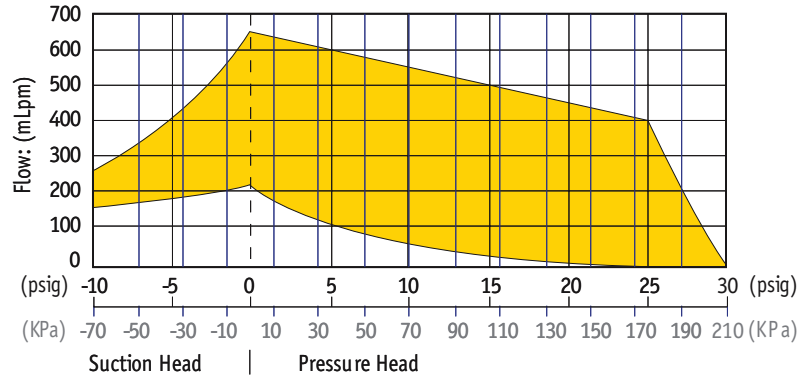
Head Configuration:	Single
Max Unrestricted Flow:	650 mL/min
Pressure Range:	0 - 30 psig (207 kPa)
Vacuum Range:	0 - 20 in Hg (508 mmHg)

LTC Series

Mini Pumps (air/gas)

Single Head Miniature Liquid Diaphragm Pump

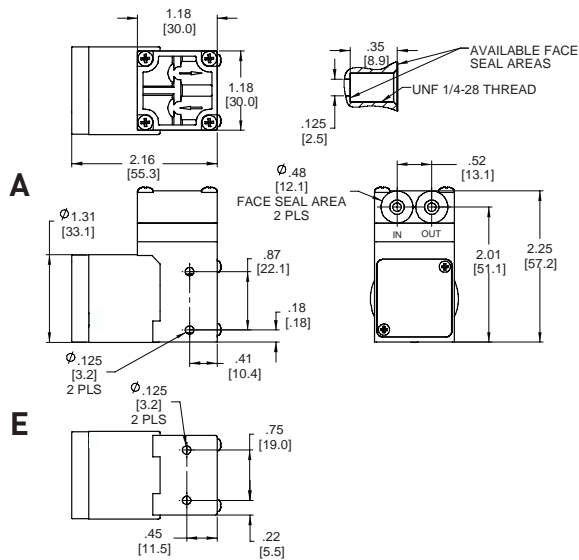
Flow



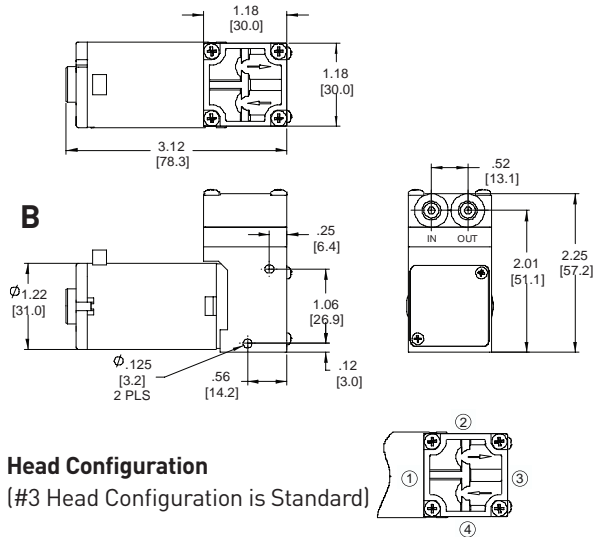
Performance ranges illustrate overall performance for all LTC pumps handling water at room temperature. Performance will vary depending on barometric pressure, media temperature, density, and viscosity.

Dimensions

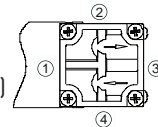
Brushless Motor
Weight - 5.0 oz (142 grams)



Brush Motor
Weight - 7.0 oz (199 grams)



Head Configuration
(#3 Head Configuration is Standard)



PPF MDP - 002/US Sept 2009

For more information call 1.800.525.2857 or email ppfinfo@parker.com
Visit www.parker.com/precisionfluidics

