

CTS Series

2.5 LPM Free Flow



CTS coreless motor shown

Typical Applications

- Gas Analyzers
- Patient Monitoring
- CO2 Monitors

Micro Pumps (air/gas)

CTS Micro Diaphragm Pumps and Compressors are a series of brushless, brush and coreless D.C. motor-driven pumps tailored to meet the specific performance requirements of your applications.

Features

- **Longevity:**

The CTS Series pump sets the highest benchmark for service free life expectancy, with our advanced proprietary diaphragm elastomer. Brushless DC motors are selected for long life; brush motors for low cost; and coreless motors for maximum energy efficiency.

- **Lightweight, Compact Size:**

The CTS Series pump design has a unique compact configuration.

- **Contamination-Free:**

Parker takes the necessary steps in manufacturing to assure that our 100% oil free pump and compressor designs maintain the purity of your system. Parker pumps and compressors are commonly used in FDA-approved systems.

- **Dynamically Balanced:**

The CTS Series pump design is uniquely balanced to minimize noise and maximize life.

Performance Data

Physical Properties

Operating Environment:
41 to 122°F (5 to 50°C)
Media:
Most Gases
Humidity:
0 – 95% RH
Wetted Material:
Diaphragm/Valves: EPDM, AEPDM
Head: PSU
Screw: 18-8 Stainless

Electrical

Motor Type (DC):
Brush, Brushless, Coreless
Nominal Motor Voltages:
6, 9, 12 VDC
Other voltages available upon request
Current Range:
50 mA - 500mA*
*Dependent on motor type, voltage, pressure/vacuum and flow requirement.

Pneumatic

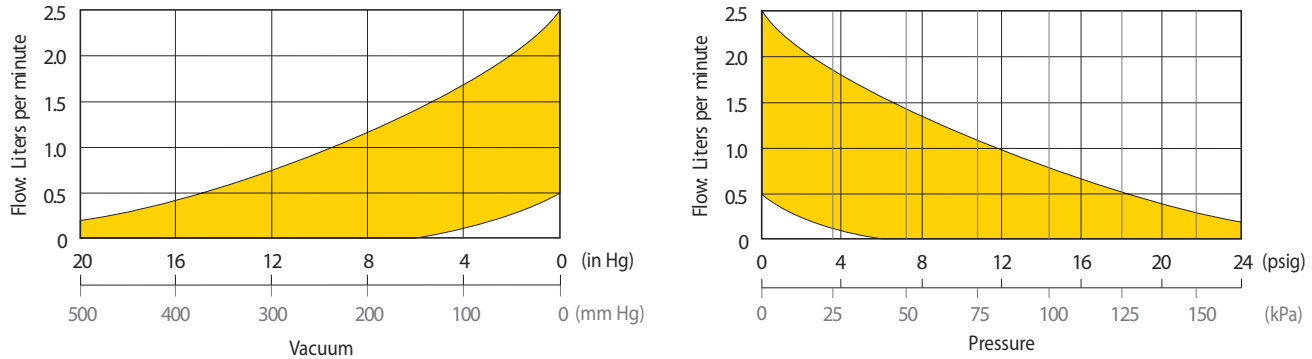
Head Configuration:
Single
Max Unrestricted Flow:
2.5 LPM
Pressure Range:
0 - 24 psig (165 kPa)
Vacuum Range:
0 - 20 in Hg (508 mmHg)

CTS Series

Micro Pumps (air/gas)

Single Head Micro Diaphragm Pump and Compressor

Flow

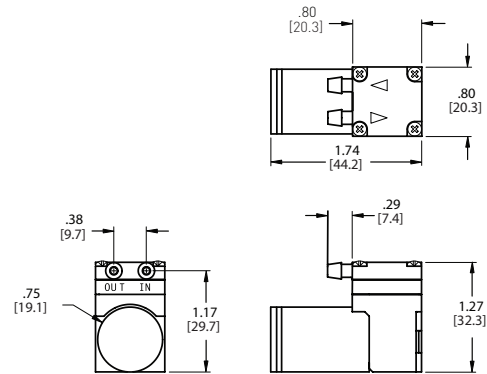
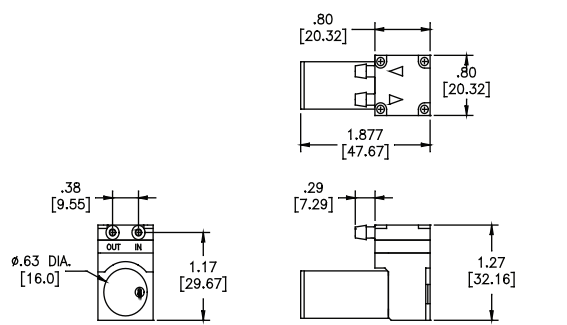


The above performance range illustrates overall performance for all CTS single-headed pumps handling air. Performance may vary depending on altitude. Consult factory with you specific requirements.

Dimensions

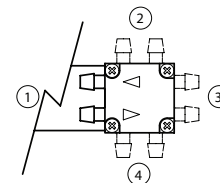
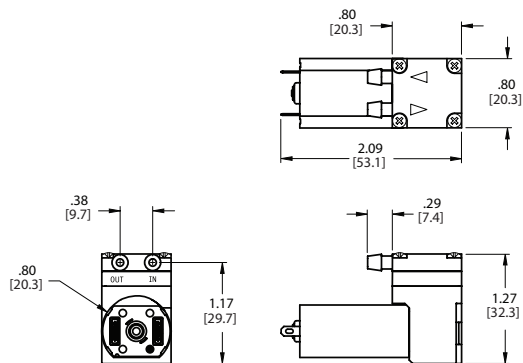
Brushless Motor
 (Pump Mass- 1.6 oz_m [45 gms])

Coreless Motor
 (PumpMass- 1.6 oz_m [45 gms])



Brush Motor
 (PumpMass- 1.7 oz_m [48 gms])

Head Configuration
 (#1 Head Configuration Standard)



PPF MDP - 002/US Sept 2009

For more information call 1.800.525.2857 or email ppfinfo@parker.com
 Visit www.parker.com/precisionfluidics

